



MONTHLY MEMBERSHIP PROGRESS REPORT

District 118 E

Results as of: 3/31/2014

GMT: HOWARD LEE

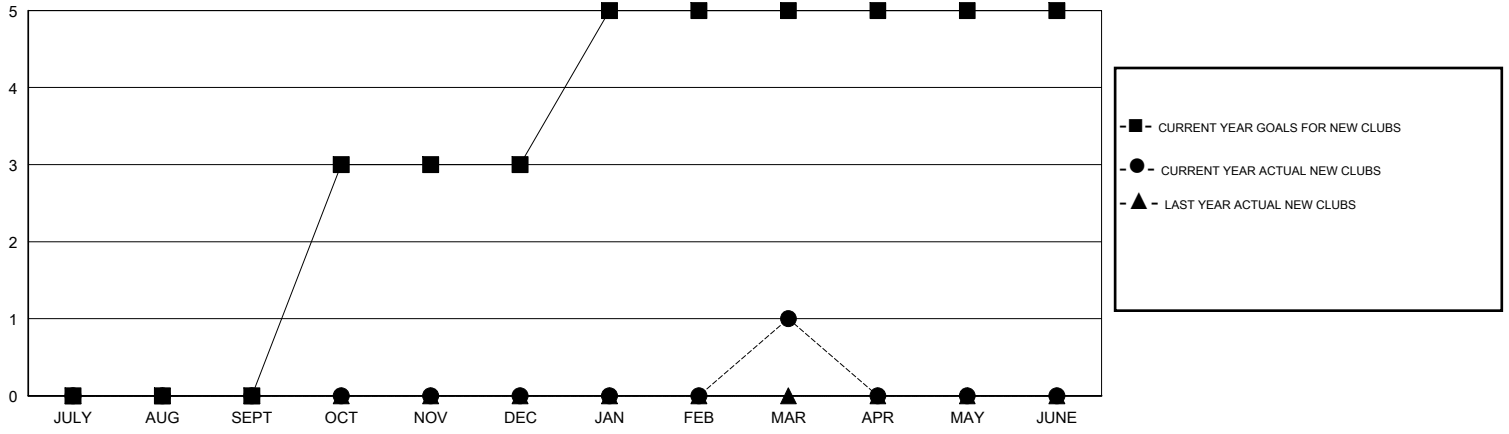
LOCATION TURKEY

GMT CA 4

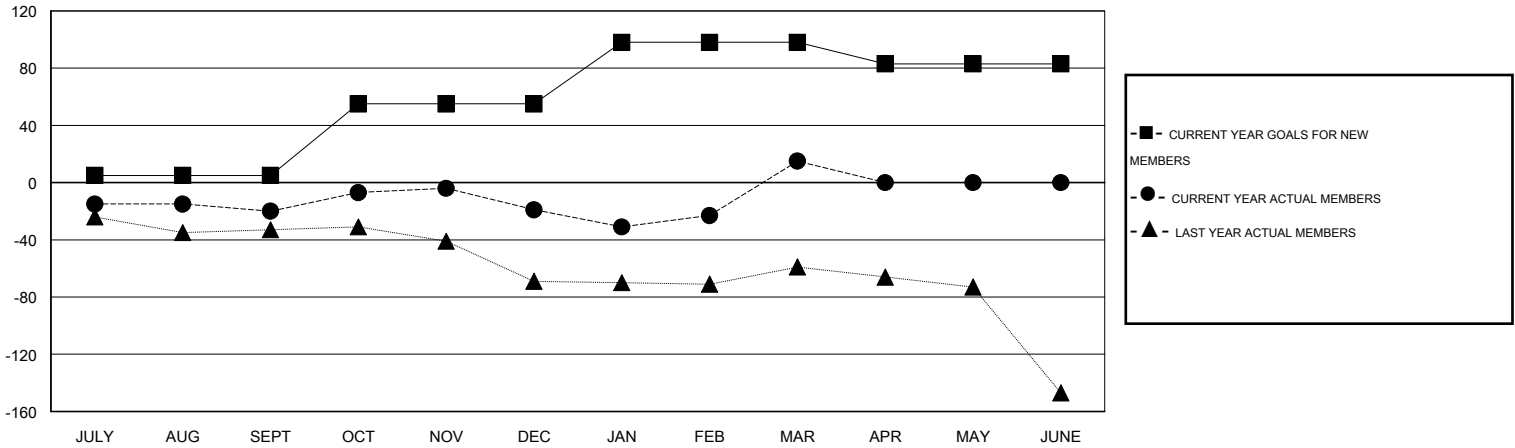
| Clubs | | | | |
|-----------------------|---------------|------------------|----------------------|----------------------|
| RESULTS FOR 2013-2014 | | | | |
| QUARTER | NEW CLUB GOAL | ACTUAL NEW CLUBS | ACTUAL DROPPED CLUBS | ACTUAL NET GAIN/LOSS |
| JULY/AUG/SEPT | 0 | 0 | 0 | 0 |
| OCT/NOV/DEC | 3 | 0 | 1 | -1 |
| JAN/FEB/MAR | 2 | 1 | 1 | 0 |
| APR/MAY/JUNE | 0 | 0 | 0 | 0 |

| Members | | | | |
|-----------------------|-----------------|----------------------------|------------------------|----------------------|
| RESULTS FOR 2013-2014 | | | | |
| QUARTER | NEW MEMBER GOAL | ACTUAL TOTAL MEMBERS ADDED | ACTUAL DROPPED MEMBERS | ACTUAL NET GAIN/LOSS |
| JULY/AUG/SEPT | 5 | 3 | 23 | -20 |
| OCT/NOV/DEC | 50 | 27 | 26 | 1 |
| JAN/FEB/MAR | 43 | 68 | 34 | 34 |
| APR/MAY/JUNE | -15 | 0 | 0 | 0 |

GOALS AND ACTUAL NEW CLUBS CUMULATIVE



GOALS AND ACTUAL MEMBERS CUMULATIVE



| |
|------------------|
| DROPPED CLUBS: 2 |
|------------------|

18 CLUBS OF 44 ADDED 1 OR MORE NEW MEMBERS

| GENDER DISTRIBUTION | |
|---------------------|--------------|
| MALE | 448 (54.04%) |
| FEMALE | 381 (45.96%) |

| DROPPED MEMBERS | |
|-----------------|-----------|
| DECEASED | 3 |
| CLUB CANCELLED | 23 |
| OTHER | 57 |
| TOTAL | 83 |

[CLICK HERE FOR HEALTH ASSESSMENT DATA](#)

| | |
|-----------------------|----|
| FAMILY UNIT MEMBERS | 60 |
| HEAD OF HOUSEHOLD | 28 |
| NON-HEAD OF HOUSEHOLD | 32 |